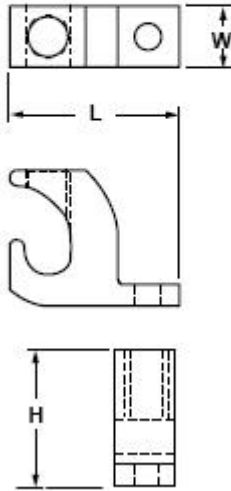


Aluminum Lay-In Lug (tin-plated)



Conductor Type: Aluminum or Copper

Conductor Range: 14 – 4 AWG

No. of Holes in Pad: 1

No. of Conductors: 1

Additional Details

Screw Size: Slot

UL Listing: 486B LISTED AL9CU

CSA Listing: Yes

Approximate Dimensions

H (in.): 25/32

L (in.): 1 1/16

W (in.): 3/8