

THIS IS AEROCOMPACT®

smart
mounting
solutions

100 MW

annual volume

with AEROCOMPACT worldwide



OVER **2000** PROJECTS
INSTALLED PER YEAR



AEROCOMPACT S

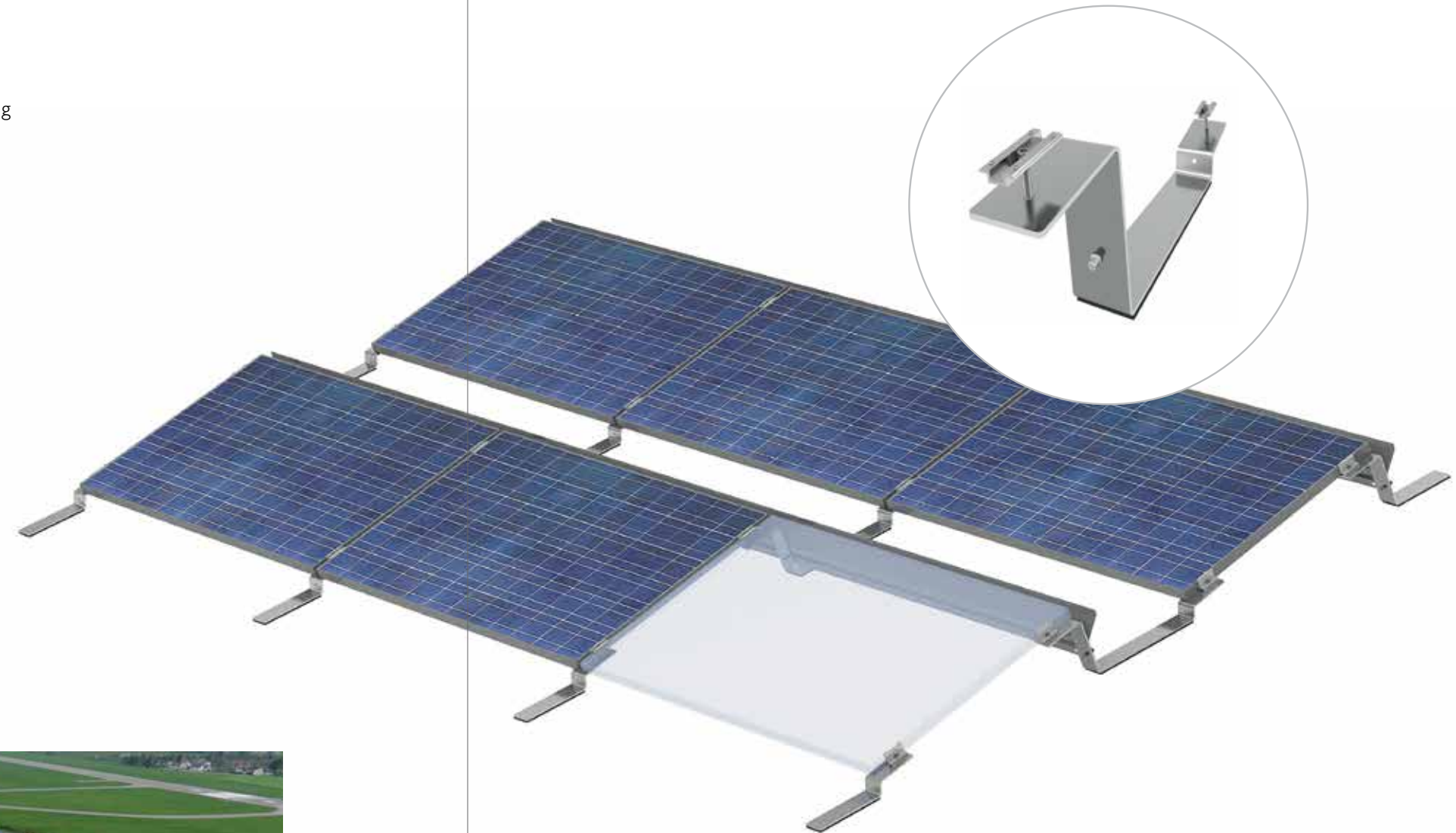
AEROCOMPACT S is our aerodynamic south-oriented racking solution for mounting framed modules on flat roofs. It is available in 5°, 10° and 15° mounting tilts, with different options for inter-row spacing.

TESTED on the HIGHEST STANDARDS

Our patent pending system is wind-tunnel tested with the newest standards, it is TUV certified to UL 2703 and has a 25-year limited product warranty. Aerocompact S has also been TUV load tested according to IEC 61215 including module flash-testing and fire-testing according to UL 1703 standards.

AEROCOMPACT S is delivered pre-assembled and with newly developed building protection mats – with long-term durability testing.

◀ 5° / 10° / 15° ▶



↓ 2.2 MWp, south S10, Wels, Austria



AEROCOMPACT+

AEROCOMPACT+ is our aerodynamic east/west-oriented flat-roof system with material and cost savings of up to 30%. The rolling design of the module layout has very little uplift and therefore, less ballast is needed.

With **AEROCOMPACT+** each kWp is easily and quickly mounted in three minutes. Like the AeroCompact S system, the **AEROCOMPACT+** also comes with a 25-year limited product warranty. It has been wind-tunnel tested, is TUV certified to UL 2703 standards and comes delivered pre-assembled with building protection mats.



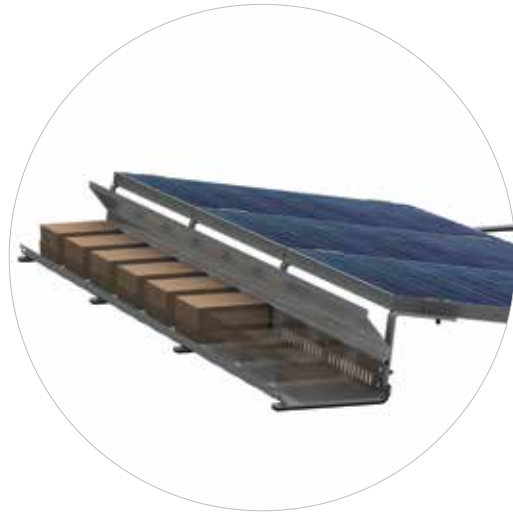
↓ 1 MWp, east/west, New York, USA



same Space / more Modules



ACCESSORIES



BALLAST TRAY

This system type with ballast trays is used in areas with high wind loads and roofs with low point loads. The main advantages of this type of installation are that more ballast per module can be installed and the evenly distributed point load on the roof surface.

When using the ballast tray on gravel roofs, and the gravel can be shoveled directly into the tray and serves as ballasting.

MICRO-INVERTER CLAMP

With the NEW update 2.1, a UL-certified micro-inverter and optimizer clamp is now available.



< In detail >



MECHANICAL ATTACHMENTS

Aerocompact offers a suitable hybrid solution for roofs that have specific weight requirements for the photovoltaic system. The combination of roof attachment points and ballasting reduces the overall weight of the system. This is also an option which is used in areas with seismic activities to prevent the array from shifting.

WIRE MANAGEMENT

The NEW wire management solution, used for string wiring the rows, is now UL-certified and available as accessory.



YOUR BIG ADVANTAGE

from the start

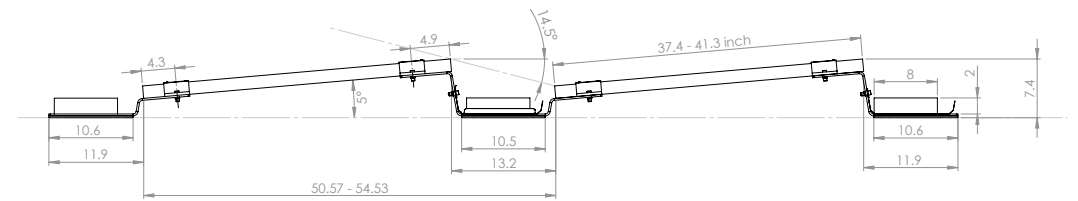
- 25 year product warranty
- Wind tunnel tested
- Incl. protection pads with aluminum coating
- TUV certified, conforms to UL 2703
- Patent pending
- Shipment of 700 kWp in one Truckload
- Without roof penetration
- Optimum module ventilation
- Complimentary ballast calculation incl. roof layout
- Made in Europe
- Minimum order quantity only 2 kWp
- Module clamps with grounding pins
- TUV certified, conforms to IEC 61215
- Fire tested according to UL 1703
- Best price performance ratio available
- The fastest installation in the industry
1 kWp, 5 min., 2 men
- Statically optimized system
- Less material = less shipping costs
- Optimized wind suction, therefore less ballasting than other systems
- Optimum water drainage
- Suitable for roof edge zones



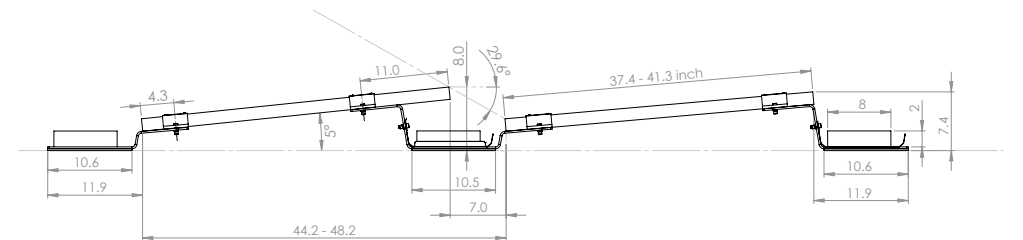
Technical details

- Mounting Tilt:** AERCOMPACT S: 5°, 10°, 15°
AERCOMPACT+: 10°
- Inter-Row Spacing:** AERCOMPACT S 5 (14.5° sun-angle): 13.2 inch (335 mm) spacing
AERCOMPACT S 5 (29.6° sun-angle): 7 inch (178 mm) spacing
AERCOMPACT S 10 (25° sun-angle): 15 inch (380 mm) spacing
AERCOMPACT S 15 (25° sun-angle): 22.5 inch (571 mm) spacing
AERCOMPACT+: 18.3 inch (464 mm) spacing
AERCOMPACT+: 11.7 inch (297 mm) spacing
- Max. Array size:** 12 x 10 rows, 120 modules
- Min. Array Size:** AERCOMPACT S: 2 rows with 3 modules / 3 rows with 2 modules
AERCOMPACT E/W: 2 rows with 2 modules
- Roof Edge Zone:** Roof areas F and G can be used
- Module Dimensions:** 37.4 – 41.3 inch x 61.1 – 81.9 inch (width - length)
- Max. Roof Slope:** 5 degree
- Roof Height:** Max. 60 ft.
- Windload:** Up to 50 psf. (Design load as a load combination of dead load and wind suction)
- Snowload:** AERCOMPACT Standard up to 50 psf.
AERCOMPACT Alpin up to 92 psf. (Design load as a load combination of dead load, wind and snow pressure)
- Module approval:** Please request approved module list from the module manufacturer or Aerocompact
- Materials:** Supporting materials made of aluminum EN AW 6060 T64, module-clamps aluminum EN AW 6063 T66, stainless steel screws, wind-deflector galvanized steel
- Shipping:** Approx. 40 kW per pallet, 700 kWp per truckload
- System Requirement:** Proof of static load capacity of the roof and the insulation needs to be provided by customer.
General terms / warranty conditions and usage agreement apply.

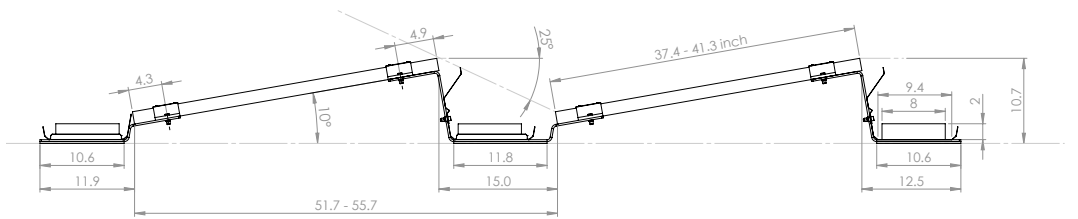
S 5 – 13.2" spacing



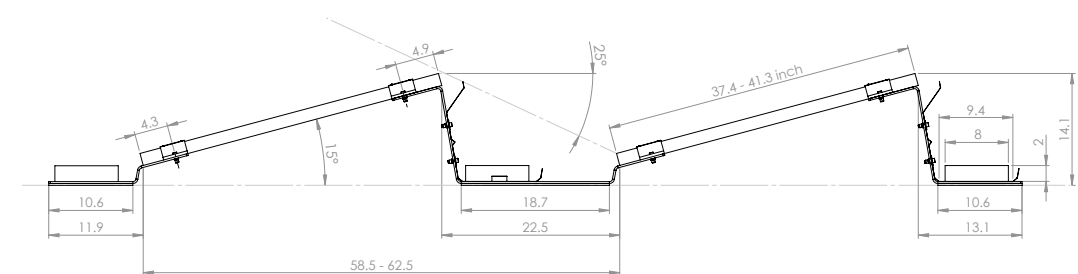
S 5 – 7" spacing



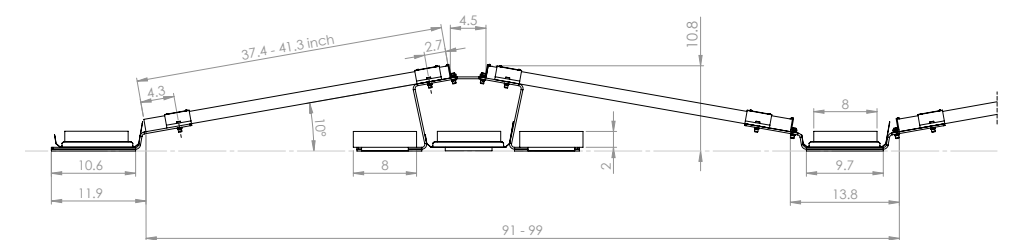
S 10 – 15" spacing



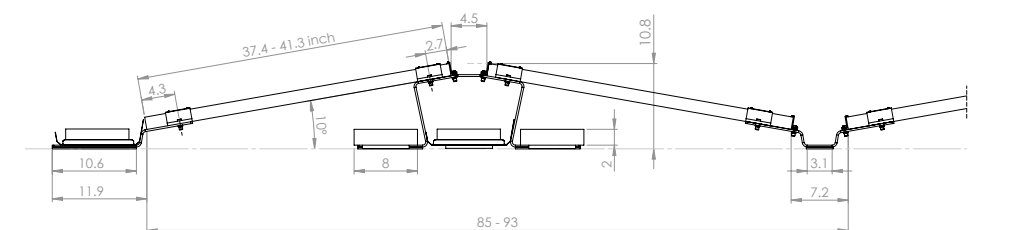
S 15 – 22.5" spacing



PLUS – 18.3" spacing



PLUS – 11.7" spacing



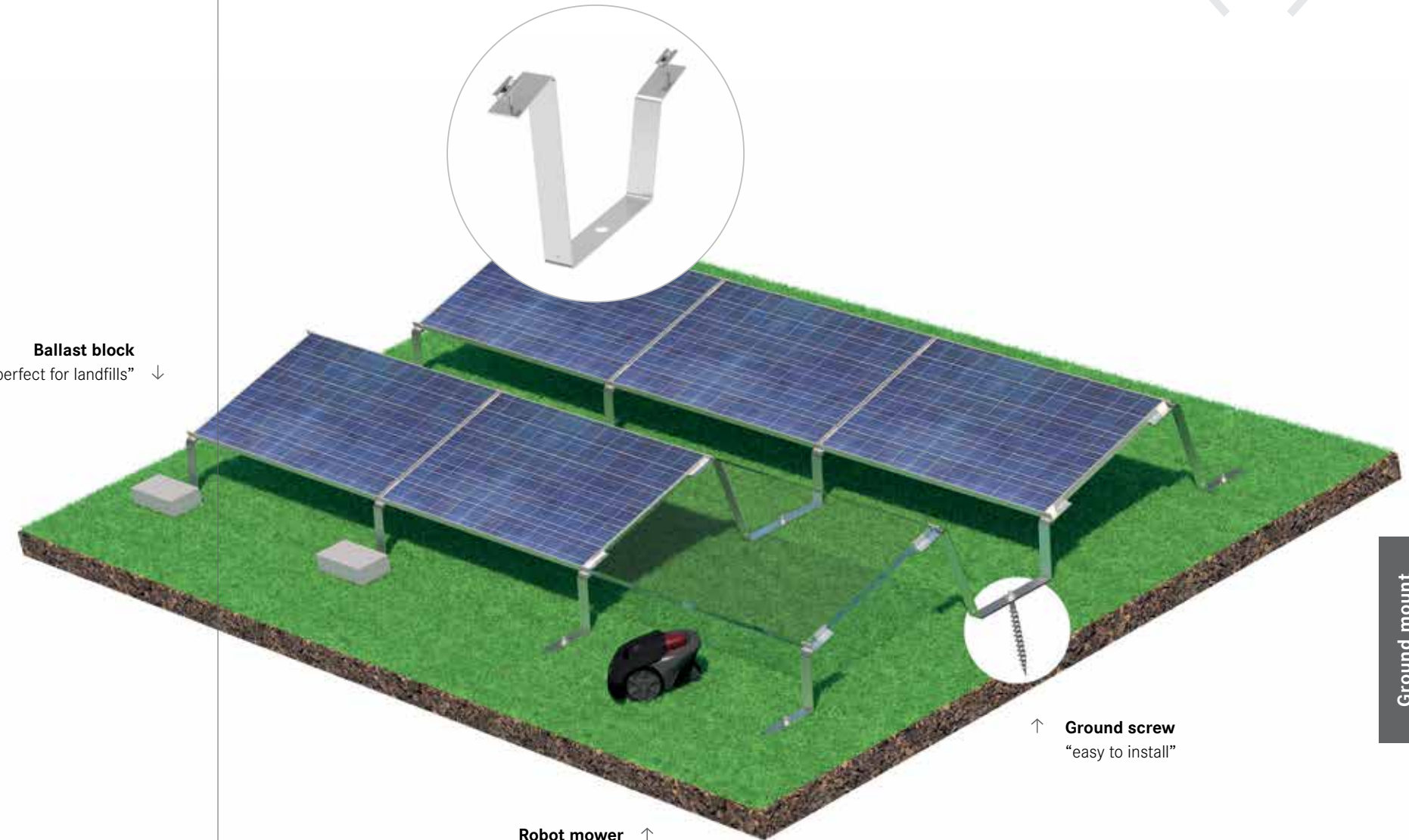
THE NEW WAY OF GROUND MOUNT



AEROCOMPACT G is our brand new south oriented ground mount system. Designed with a 15° or 20° module tilt.

With the fastest installation time in the industry and the ability to ship 700 kWp per truckload, the AEROCOMPACT G provides both material and labor cost savings. The system can be installed with ground screws or ballast blocks.

Ballast block
"perfect for landfills" ↓



↑ **Ground screw**
"easy to install"

↑ **Robot mower**
"smart landscaping"

↓ 27 kWp, near of Chicago, USA



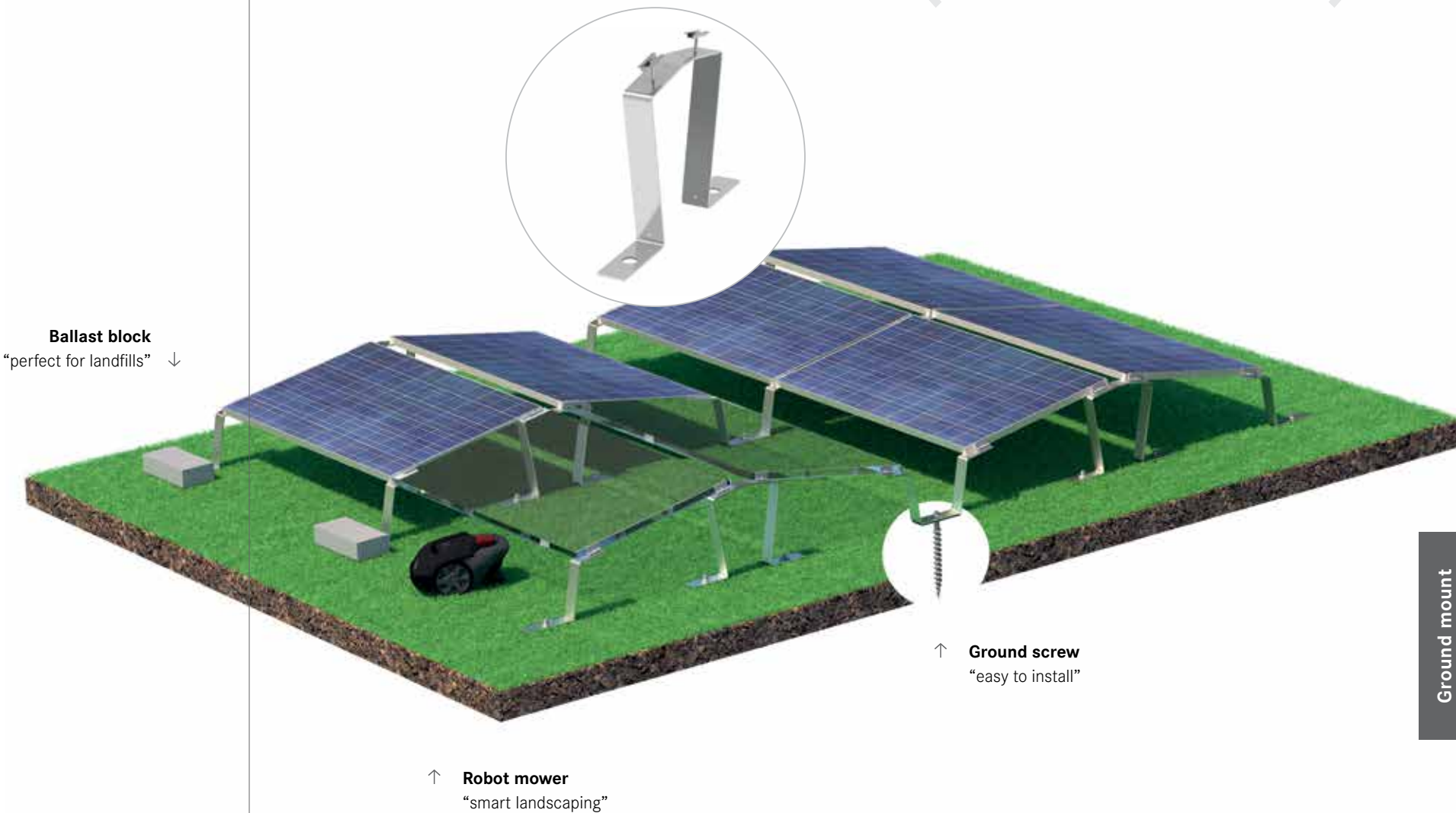
**no ramming and
no big machinery needed**



EAST/WEST GROUND MOUNT

AEROCOMPACT G+ is the new east/west oriented ground mount system with up to 30% more modules on the same ground space. Designed with a 10° module tilt and elevated 15.74" off the ground from the lowest module point. Like the south facing system the east/west can be installed with ground screws or ballast blocks.

< G+ east/west >



Ground mount

Ground mount

↓ 300 kWp, east/west, Dubai, VAE



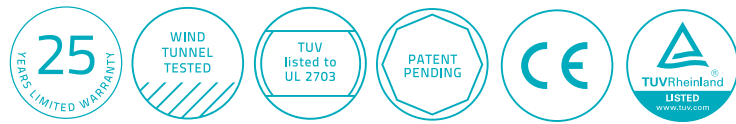
the optimum solution
to save space



YOUR BIG ADVANTAGE

from the start

- 25 year product warranty
- Wind tunnel tested
- TUV certified, conforms to UL 2703
- Patent pending
- Shipment of 700 kWp in one Truckload
- Complimentary ballast calculation incl. roof layout
- Made in Europe
- Minimum order only 2 kWp
- Module clamps with grounding pins
- The fastest groundmount installation in the industry



Technical details

Module Tilt: AEROCOMPACT G: 15°, 20°
AEROCOMPACT G+: 10°

Inter-row Spacing: AEROCOMPACT G 15 (25° sun-angle): 21.9 inch (555 mm) spacing
AEROCOMPACT G 20 (25° sun-angle): 28.9 inch (734 mm) spacing
AEROCOMPACT+: 23.9 inch (609 mm) spacing

Space to the ground: AEROCOMPACT G 15: 15.75 inch (400 mm) height
AEROCOMPACT G 20: 12.51 inch (318 mm) height
AEROCOMPACT+: 15.75 inch (400 mm) height

Grounded clamps, tested to UL 2703

Module dimensions: 37.4–41.3 x 61.1–81.9 inch

Max ground slope: 20 degree

Wind-/Snowload: Up to 40 psf. (Design load as a load combination of dead load and wind suction)

Max. Array size: 12 x 20 rows, 240 modules

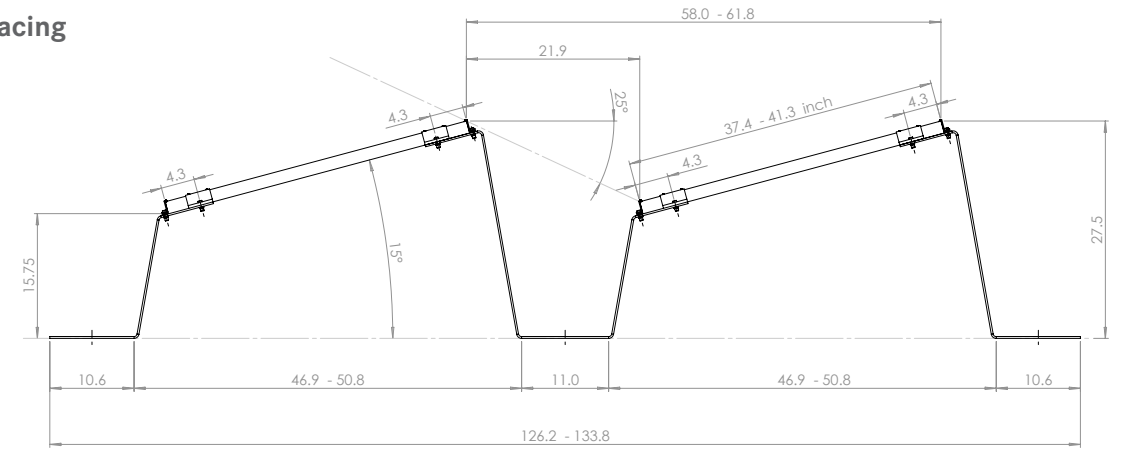
Min. Array Size: AEROCOMPACT G: 2 rows with 3 modules / 3 rows with 2 modules
AEROCOMPACT E/W: 2 rows with 2 modules

Material: Supporting materials made of aluminum EN AW 6060 T64, module-clamps aluminum EN AW 6063 T66, stainless steel screws.

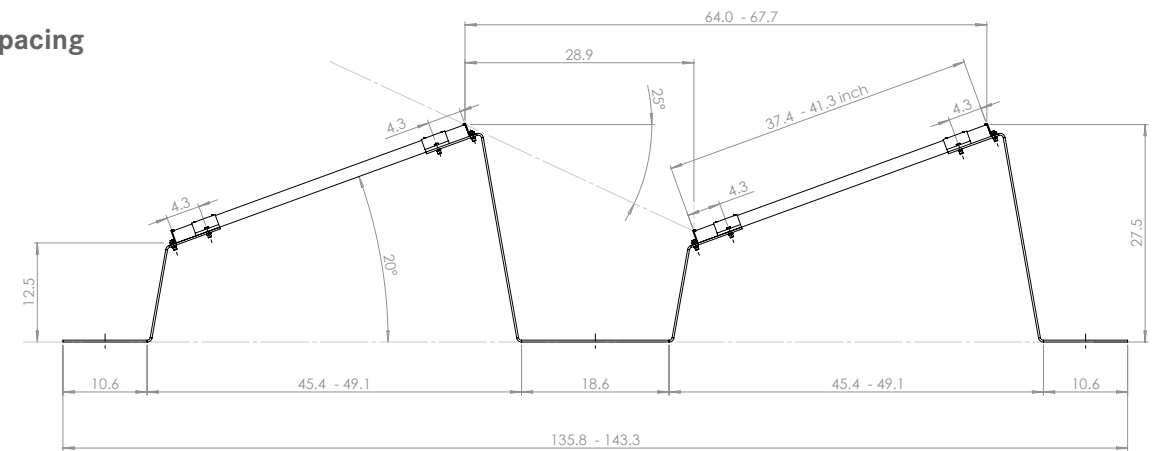
Shipping: Approx. 700 kWp per truckload

To prevent weed growth, we recommend a robot mower or a fleece layer.

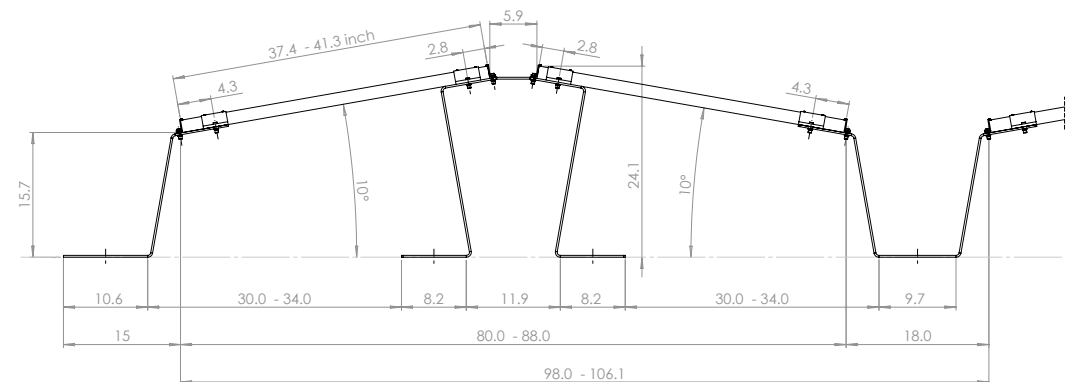
G15 – 21.9" spacing



G20 – 28.9" spacing

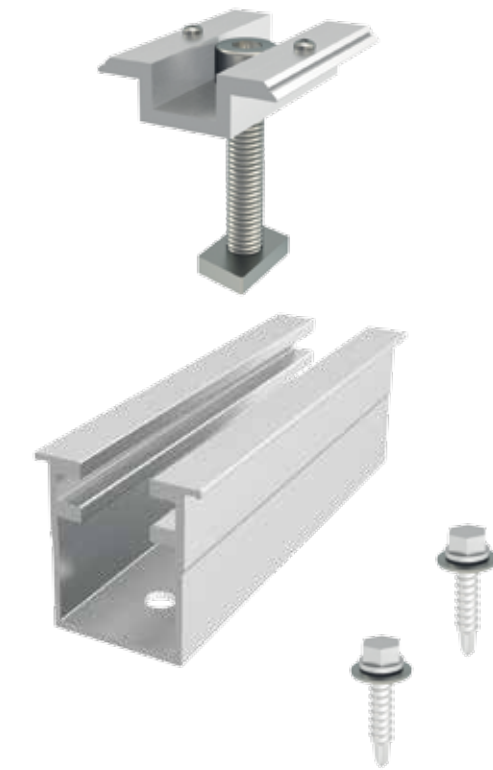
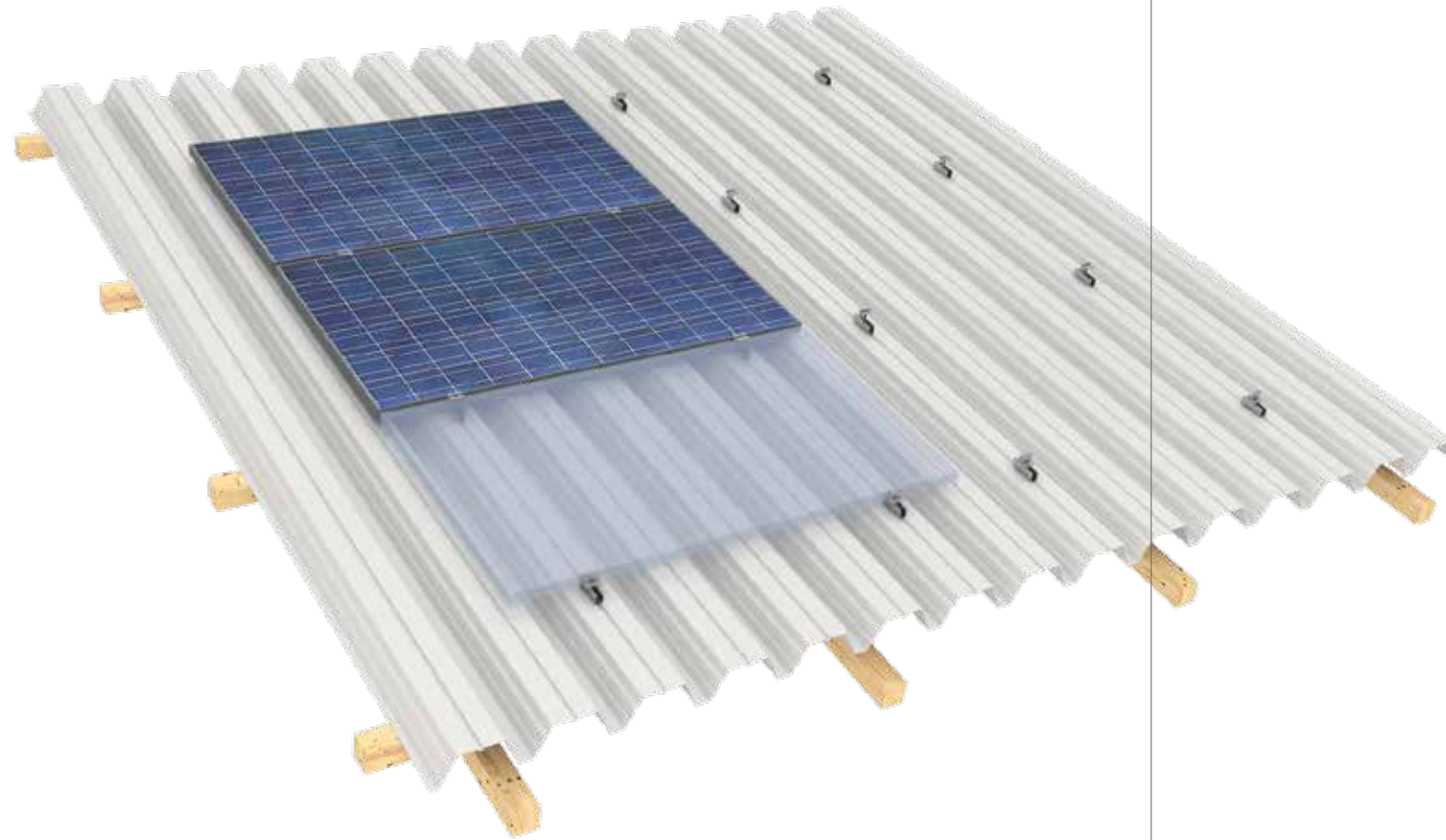


G PLUS – 23.9" spacing



TRAPEZOIDAL short rail

⟨ TS ⟩



Technical details

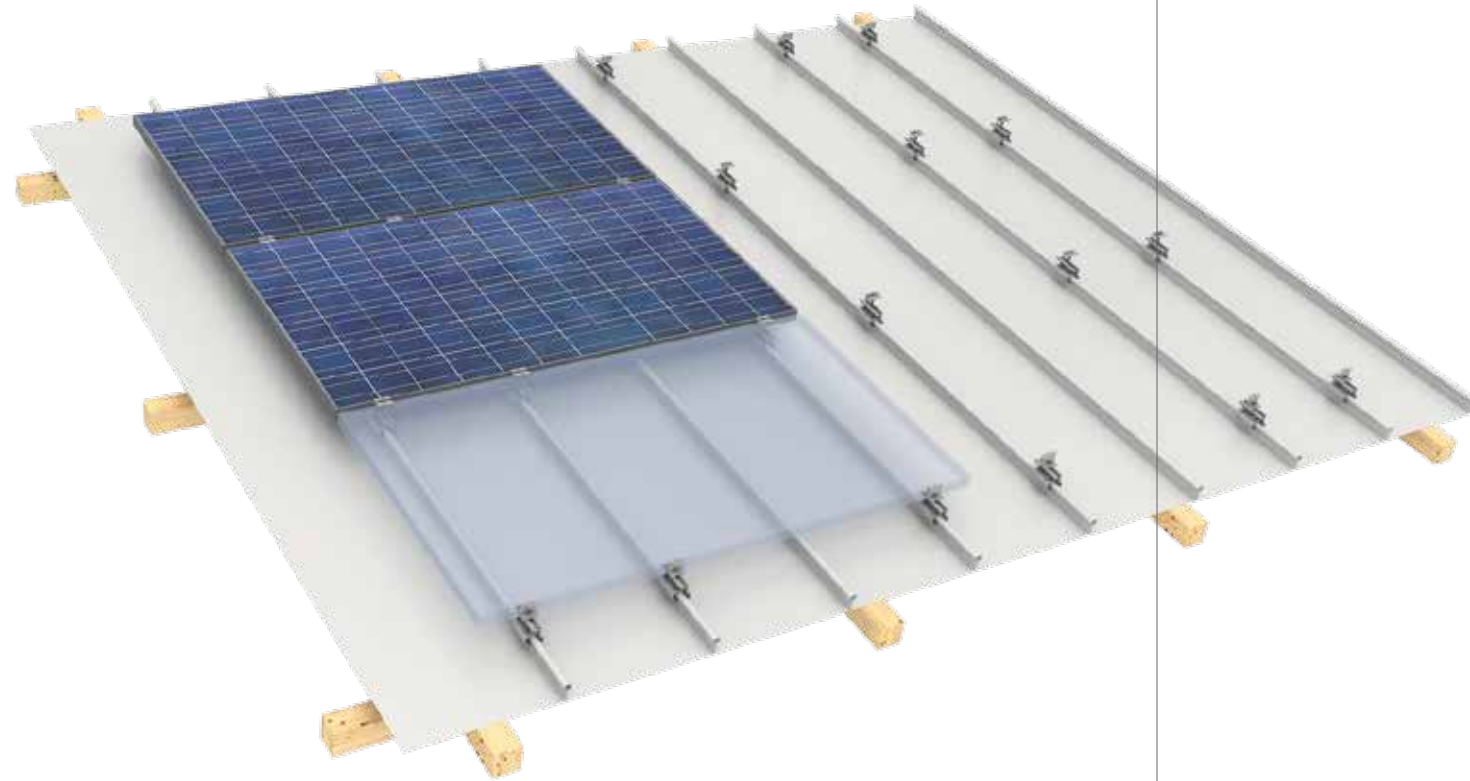
- **Grounded clamps**
- **25 year limited product warranty**
- **Module orientation:** Landscape
- **Rail length:** 4 inch
- **Module type:** Framed modules, 1.18 – 1.96 inch
- **Wind-/Snowload:** According approval module manufacturer
- **Max. row size:** 4.72 inch
- **Pre-assembled with sealing tape**
- **Including two metal screws with sealing ring**
- **Material:** Supporting materials and clamps made of aluminum EN AW 6060 T64, stainless steel screws.

REAL VALUE

The **TS** is our trapezoidal short rail solution with the best price performance ratio. It is delivered with a pre-mounted sealing tape underneath, two screws with rubber sealing and the pre-assembled grounding clamp.

STANDING SEAM clamp

⟨ T1 ⟩



Technical details

- **Grounded clamps**
- **25 year limited product warranty**
- **Module orientation:** Landscape or Portrait
- **Module type:** Framed modules, 1.18 – 1.96 inch
- **Wind-/Snowload:** According approval module manufacturer
- **Max. row size:** 2.36 inch
- **Clamping range:** 0.02 – 0.6 inch
- **Opening dimension:** 1 inch
- **Material:** Supporting materials and clamps made of aluminum EN AW 6060 T64, stainless steel screws.

THE ONE PARTNER

The **T1** is our solution for all common standing seam roofs. With just two components the clamp is very easy to install and comes with the pre-assembled module clamp with grounding pins.

The T1 is the one partner for your standing seam roofs.

Complimentary Design Software

AEROTOOL LIGHT

< new >

Aerocompact's new system update 2.1 includes our one-of-a-kind online software, **AeroTool LT**, now available to our customers AT NO CHARGE. With the use of Google Maps, plan your photovoltaic projects quickly, easily and most importantly free of charge.

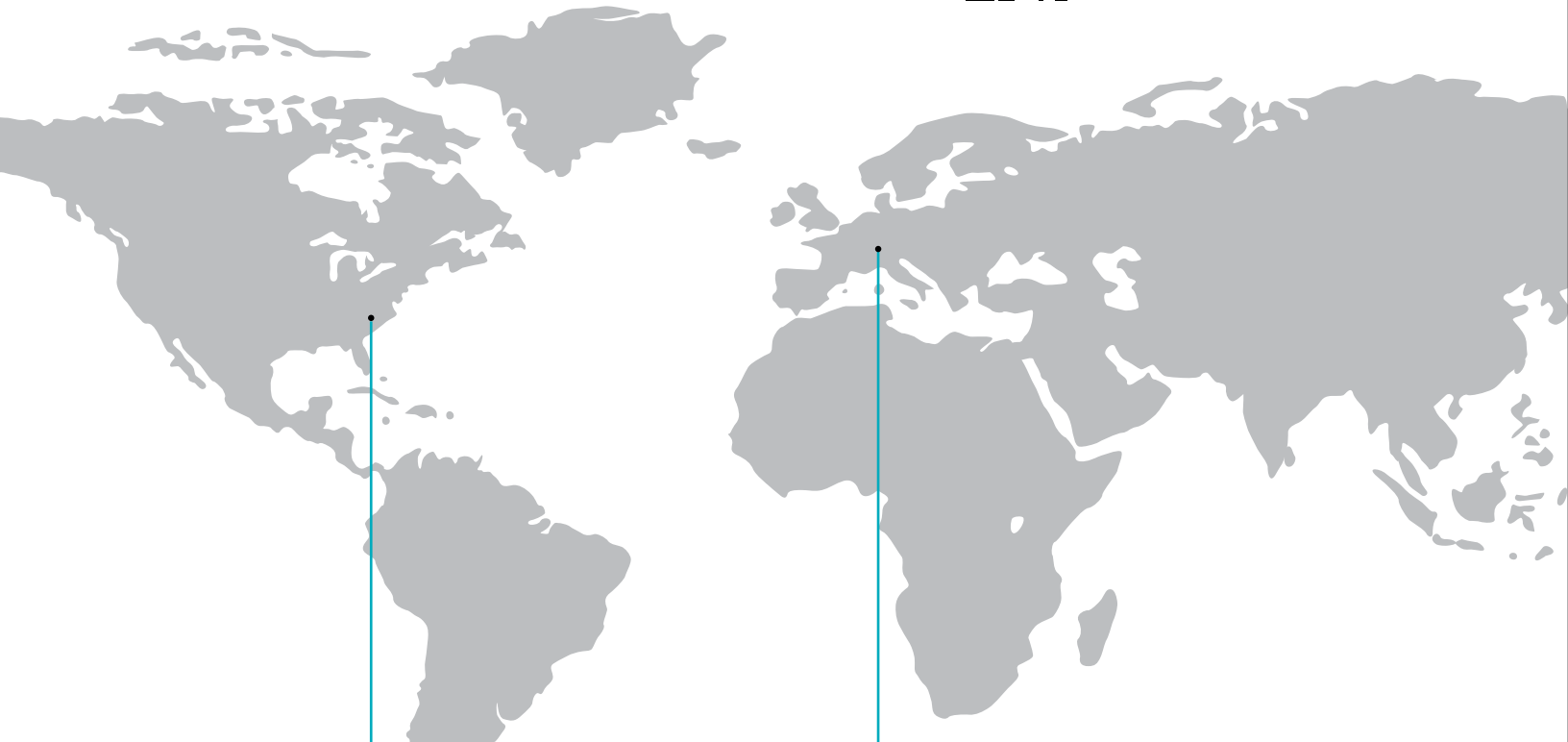
The result is a detailed ballast plan that has taken into consideration the world-wide, site-specific static codes, wind and snow data, as well as shadows during the course of the day in order to determine the ballasting needs of the system.



↑ 3D-simulation



get more information!
www.aerocompact.com



HEADQUARTERS – USA

AEROCOMPACT®
901A Matthews Mint Hill Road
Matthews, NC, 28105
Toll free 800 578 0474
E-mail office@aerocompact.com
Web www.aerocompact.com

Sales Office California

55 New Montgomery Str. Suite 624
San Francisco, CA 94105
Phone. 415 205 4554

Distribution Center West Coast

7575 E. Redfield Rd. Suite 125
Scottsdale, AZ 85260

Sales Office Colorado

6565 South Dayton St. Suite 3650
Greenwood Village, CO 80111
Phone +1 800 578 0474

HEADQUARTERS – EUROPE

AEROCOMPACT®
Gewerbstrasse 14
6822 Satteins, Austria / Europe
Phone +43 (0)5524 225 66
E-Mail office@aerocompact.com
Web www.aerocompact.com

Engineering Office Germany

Sasbacher Str. 7
79111 Freiburg im Breisgau

Sales Office Hungary

Laki utca 11/B
2141 Csömör
Phone +36 30 220 39 22

Sales Office France

367 Chemin de Naude
64300 Orhez
Phone +33 559 69 49 76

Sales Office Benelux

Kloosterweg 1
6412 CN Heerlen (NL)
Phone +31 62 255 44 95